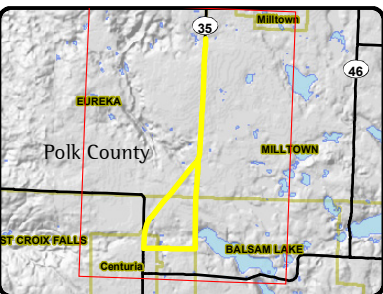


## APPENDIX A FIGURE 9 - FLOODPLAINS MAP

### Centuria 69 kV Transmission Line and Substation Project



**Location**  
 Parts of S19 and S30-31, T35N, R17W;  
 S36, T35N, R18W; S1 and S12, T34N, R18W  
 Polk County, WI

0 1,000 2,000 Feet

**Project Information**  
 Project Number : 009-0015-01  
 September 4, 2009

**Legend**

- Nodes
- Approximate Preferred Route
- Approximate Alternate Route Segment
- Approximate Substation Site
- Municipal Boundary
- ▨ Zone A - 100 yr Flood Zone\*

\*Floodplains digitized based on hardcopy FEMA FIRM maps.

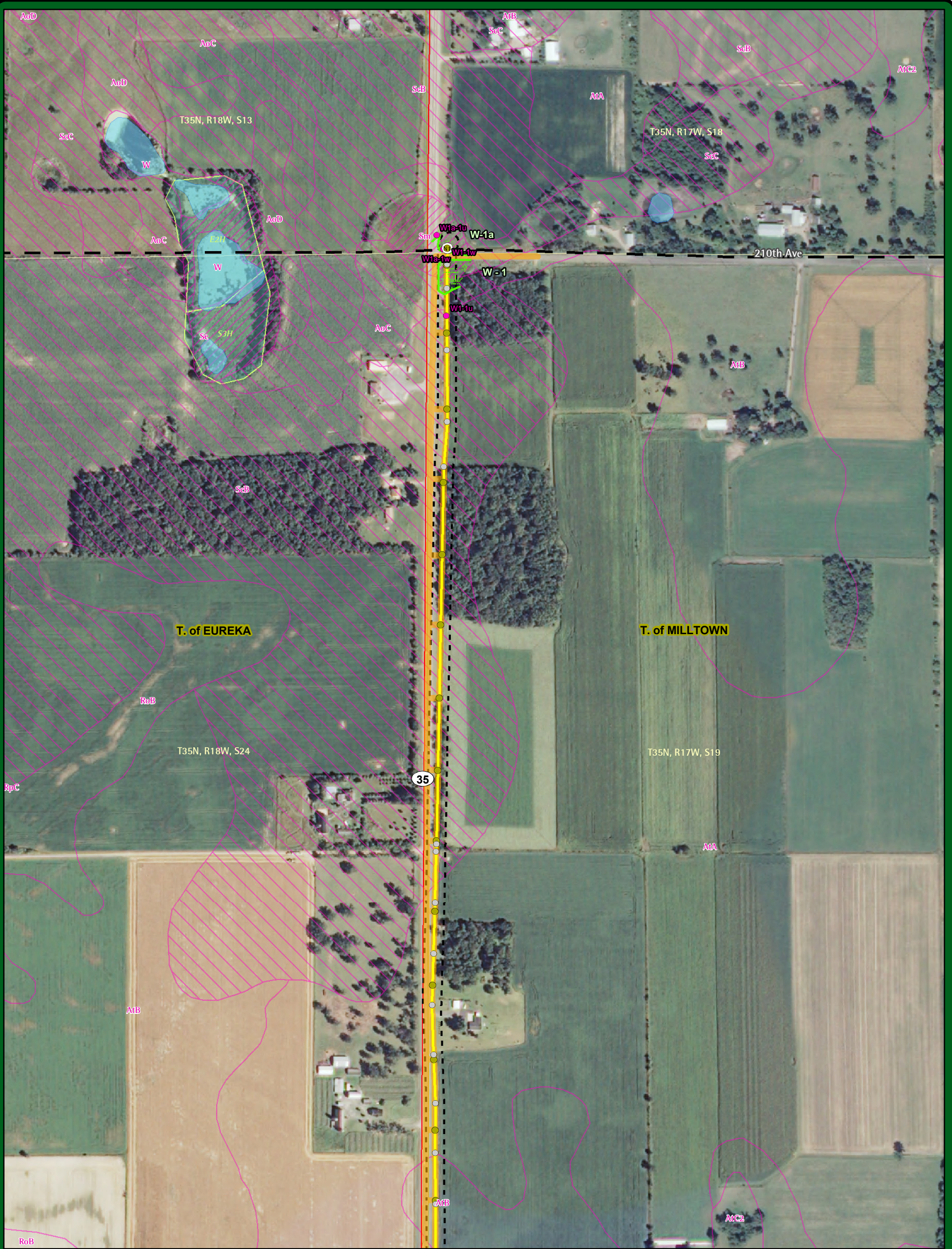
Mapping Provided By:

**NRC**  
 Natural Resources Consulting, Inc.

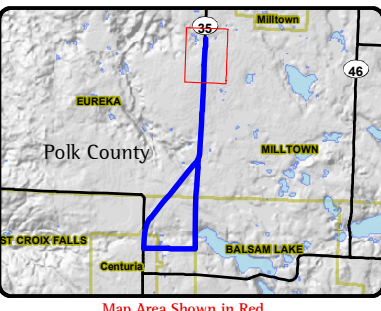
209 Commerce Parkway  
 P.O. Box 128  
 Cottage Grove, WI 53527-0128  
 phone: 608-839-1998  
 fax: 608-839-1995  
[www.nrcdifference.com](http://www.nrcdifference.com)

The information presented in this map document is advisory and is intended for reference purposes only.

Base Map Data Sources: NWECC, WDOT, WDNR, Polk County GIS & FEMA



# APPENDIX A FIGURE 10 - ENVIRONMENTAL FEATURES and ACCESS PLAN Centuria 69 kV Transmission Line and Substation Project



**Location**  
Parts of S19 and S30-31, T35N, R17W;  
S36, T35N, R18W; S1 and S12, T34N, R18W  
Polk County, WI

0 200 400 Feet

**Project Information**  
Project Number : 009-0015-01  
September 4, 2009

**Legend**

- Nodes
- Approximate Proposed Structures
- Existing Distribution Line Structures
- Sample Point
- Approximate Preferred Route
- Approximate Alternate Route Segment
- Existing 69kV Transmission Line
- Existing Distribution Line
- Approximate Substation Site
- 180 ft Project ROW
- Trail
- Construction Access
- Township Line
- Section Line
- Municipal Boundary
- DNR 24k Hydrography
- Perennial Stream
- Intermittent Stream
- Waterbody
- NRCS Soil Survey Data
- Hydric Soil
- Poss. Hydric Inclusion
- Non-Hydric Soil
- Field Delineated Wetland
- Field Delineated Wetland Line
- WI Wetland Inventory Data

**Mapping Provided By:**

**NRC**  
Natural Resources Consulting, Inc.

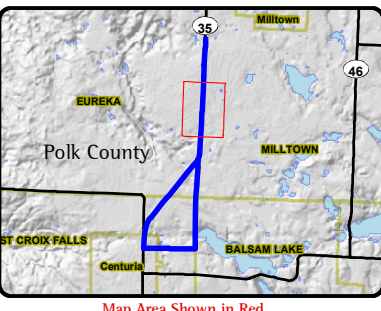
209 Commerce Parkway  
P.O. Box 128  
Cottage Grove, WI 53527-0128  
phone: 608-839-1998  
fax: 608-839-1995  
www.nrcdifference.com

Base Map Data Sources: NWECC, WDOT, WDNR, Polk County GIS & USDA NAIP 2008 Orthophotography

Appendix A Figure 10 - Page 1 of 8



## APPENDIX A FIGURE 10 - ENVIRONMENTAL FEATURES and ACCESS PLAN Centuria 69 kV Transmission Line and Substation Project



**Location**  
Parts of S19 and S30-31, T35N, R17W;  
S36, T35N, R18W; S1 and S12, T34N, R18W  
Polk County, WI

0 200 400 Feet

**Project Information**  
Project Number : 009-0015-01  
September 4, 2009

Legend	
○ Nodes	■ 80 ft Project ROW
● Approximate Proposed Structures	— Trail
○ Existing Distribution Line Structures	— Construction Access
● Sample Point	— Township Line
— Approximate Preferred Route	— Section Line
— Approximate Alternate Route Segment	— Municipal Boundary
— Existing 69kV Transmission Line	— DNR 24k Hydrography
— Existing Distribution Line	— Perennial Stream
— Approximate Substation Site	— Intermittent Stream
	— Waterbody
	— NRC Soil Survey Data
	— Hydric Soil
	— Poss. Hydric Inclusion
	— Non-Hydric Soil
	— Field Delineated Wetland
	— Field Delineated Wetland Line
	— WI Wetland Inventory Data

Mapping Provided By:

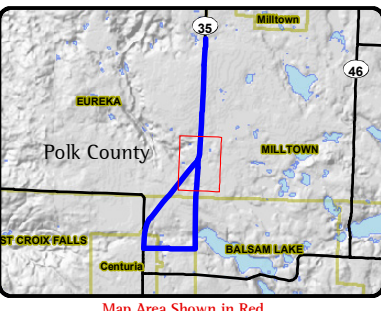
**NRC**  
Natural Resources Consulting, Inc.

209 Commerce Parkway  
P.O. Box 128  
Cottage Grove, WI 53527-0128  
phone: 608-839-1998  
fax: 608-839-1995  
www.nrcdifference.com

Base Map Data Sources: NWECC, WDOT, WDNR, Polk County GIS & USDA NAIP 2008 Orthophotography



# APPENDIX A FIGURE 10 - ENVIRONMENTAL FEATURES and ACCESS PLAN Centuria 69 kV Transmission Line and Substation Project



**Location**  
Parts of S19 and S30-31, T35N, R17W;  
S36, T35N, R18W; S1 and S12, T34N, R18W  
Polk County, WI

0 200 400 Feet

**Project Information**  
Project Number : 009-0015-01  
September 4, 2009

Legend	
○ Nodes	■ 180 ft Project ROW
● Approximate Proposed Structures	— Trail
○ Existing Distribution Line Structures	— Construction Access
● Sample Point	— Township Line
— Approximate Preferred Route	— Section Line
— Approximate Alternate Route Segment	— Municipal Boundary
— Existing 69kV Transmission Line	— DNR 24k Hydrography
— Existing Distribution Line	— Perennial Stream
— Approximate Substation Site	— Intermittent Stream
	— Waterbody
	— NRCS Soil Survey Data
	— Hydric Soil
	— Poss. Hydric Inclusion
	— Non-Hydric Soil
	— Field Delineated Wetland
	— Field Delineated Wetland Line
	— WI Wetland Inventory Data

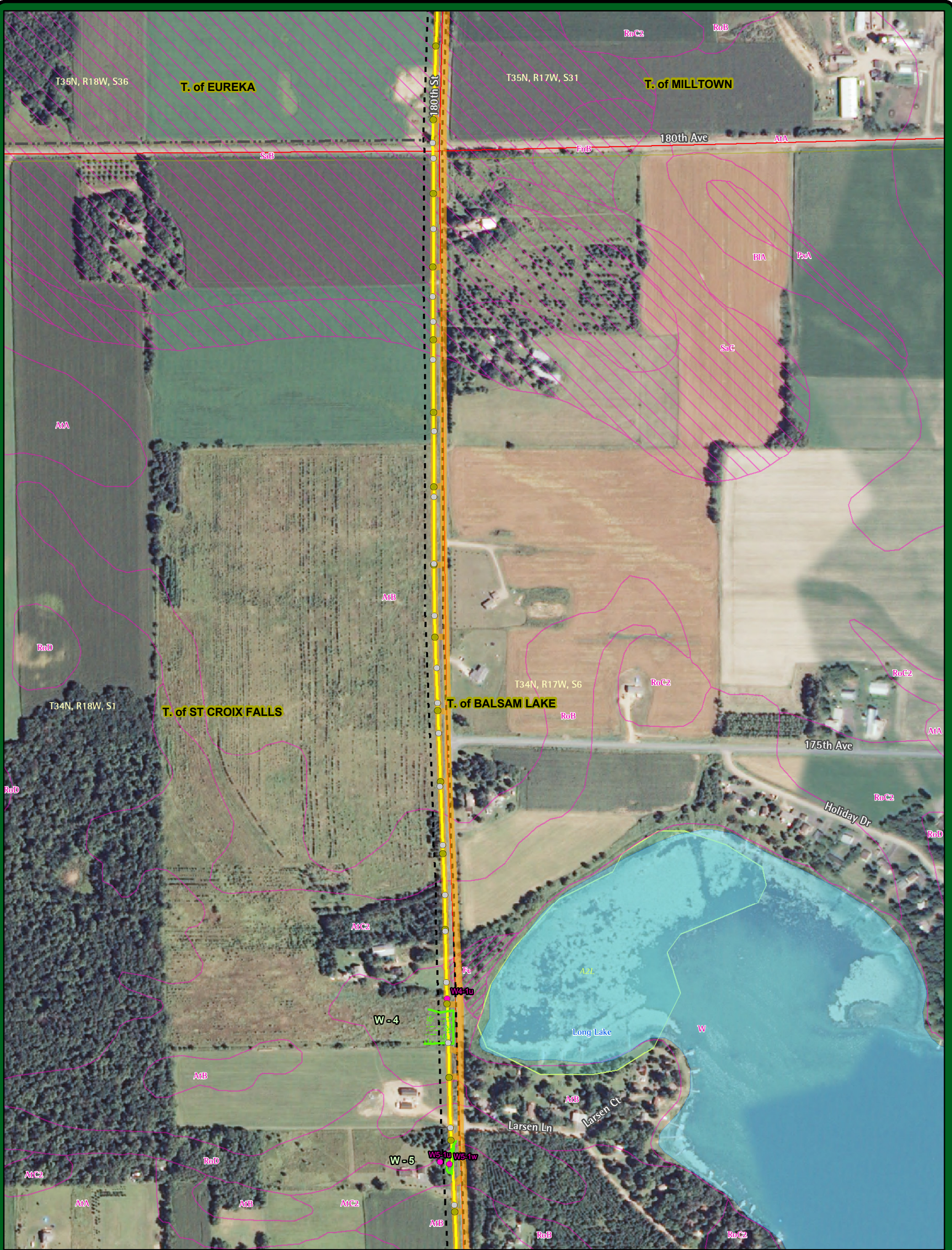
Mapping Provided By:

**NRC**  
Natural Resources Consulting, Inc.

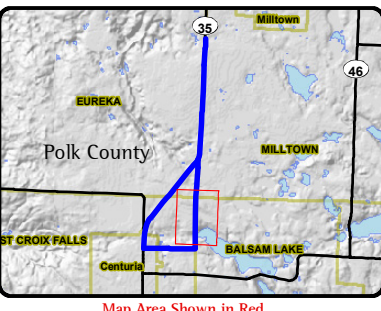
209 Commerce Parkway  
P.O. Box 128  
Cottage Grove, WI 53527-0128  
phone: 608-839-1998  
fax: 608-839-1995  
www.nrcdifference.com

Base Map Data Sources: NWECC, WDOT, WDNR, Polk County GIS & USDA NAIP 2008 Orthophotography

Appendix A Figure 10 - Page 3 of 8



## APPENDIX A FIGURE 10 - ENVIRONMENTAL FEATURES and ACCESS PLAN Centuria 69 kV Transmission Line and Substation Project



**Location**  
Parts of S19 and S30-31, T35N, R17W;  
S36, T35N, R18W; S1 and S12, T34N, R18W  
Polk County, WI

0 200 400 Feet

**Project Information**  
Project Number : 009-0015-01  
September 4, 2009

**Legend**

- Nodes
- Approximate Proposed Structures
- Existing Distribution Line Structures
- Sample Point
- Approximate Preferred Route
- Approximate Alternate Route Segment
- Existing 69kV Transmission Line
- Existing Distribution Line
- Approximate Substation Site
- 180 ft Project ROW
- Trail
- Construction Access
- Township Line
- Section Line
- Municipal Boundary
- DNR 24k Hydrography
- Perennial Stream
- Intermittent Stream
- Waterbody
- NRCS Soil Survey Data
- Hydric Soil
- Poss. Hydric Inclusion
- Non-Hydric Soil
- Field Delineated Wetland
- Field Delineated Wetland Line
- WI Wetland Inventory Data

**Mapping Provided By:**

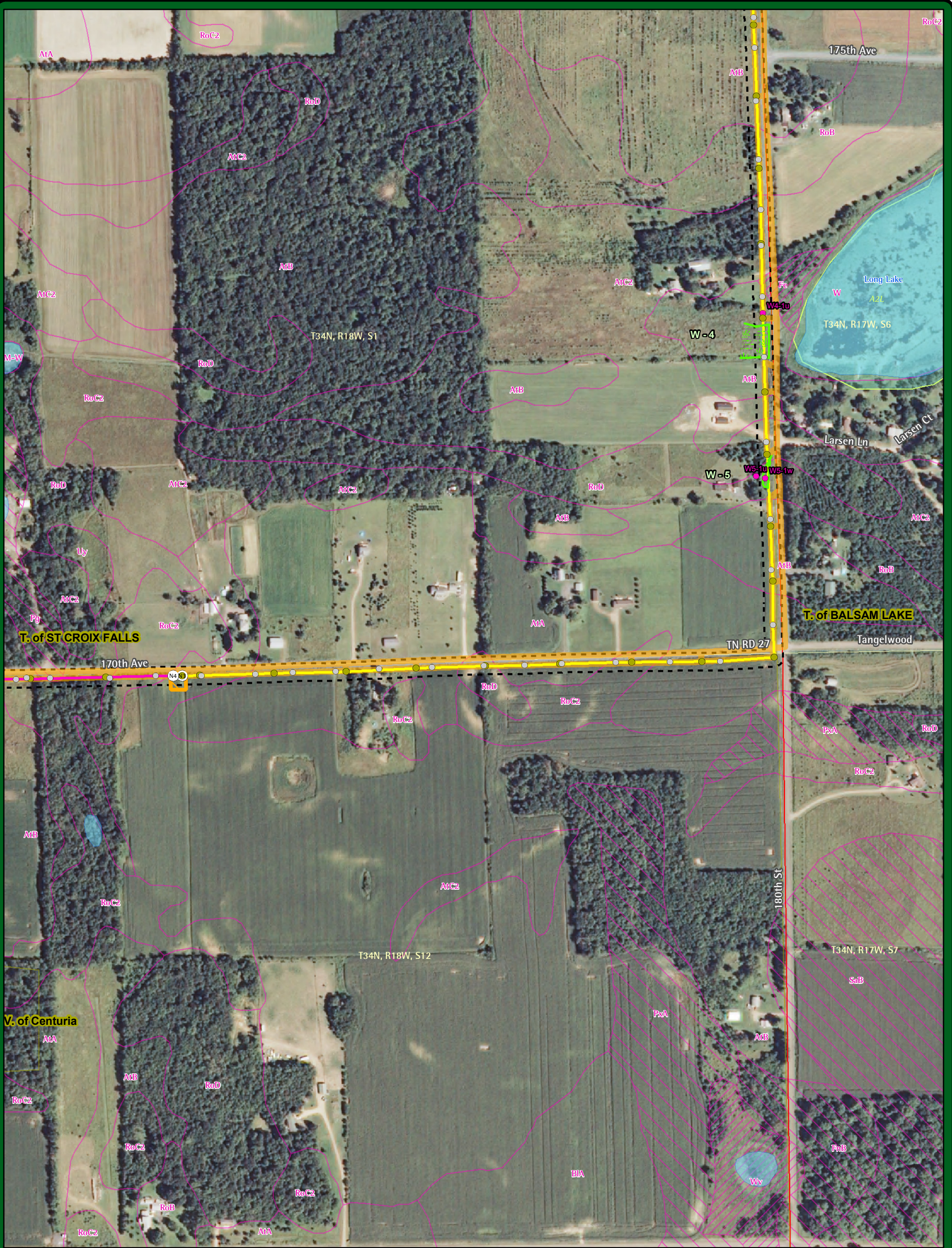
**NRC**  
Natural Resources Consulting, Inc.

209 Commerce Parkway  
P.O. Box 128  
Cottage Grove, WI 53527-0128  
phone: 608-839-1998  
fax: 608-839-1995  
www.nrcdifference.com

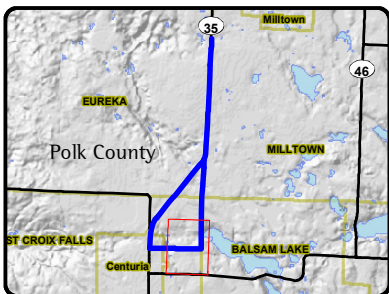
Base Map Data Sources: NWE, WDOT, WDNR, Polk County GIS & USDA NAIP 2008 Orthophotography

Appendix A Figure 10 - Page 4 of 8

The information presented in this map document is advisory and is intended for reference purposes only.



## APPENDIX A FIGURE 10 - ENVIRONMENTAL FEATURES and ACCESS PLAN Centuria 69 kV Transmission Line and Substation Project



**Location**  
Parts of S19 and S30-31, T35N, R17W;  
S36, T35N, R18W; S1 and S12, T34N, R18W  
Polk County, WI

0 200 400 Feet

**Project Information**  
Project Number : 009-0015-01  
September 4, 2009

Legend	
○ Nodes	■ 180 ft Project ROW
● Approximate Proposed Structures	— Trail
○ Existing Distribution Line Structures	— Construction Access
● Sample Point	— Township Line
— Approximate Preferred Route	— Section Line
— Approximate Alternate Route Segment	— Municipal Boundary
— Existing 69kV Transmission Line	— DNR 24k Hydrography
— Existing Distribution Line	— Perennial Stream
— Approximate Substation Site	— Intermittent Stream
	— Waterbody
	— NRCS Soil Survey Data
	— Hydric Soil
	— Poss. Hydric Inclusion
	— Non-Hydric Soil
	— Field Delineated Wetland
	— Field Delineated Wetland Line
	— WI Wetland Inventory Data

Mapping Provided By:

**NRC**  
Natural Resources Consulting, Inc.

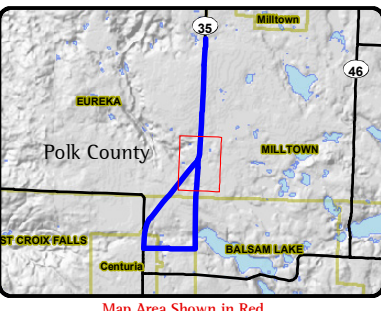
209 Commerce Parkway  
P.O. Box 128  
Cottage Grove, WI 53527-0128  
phone: 608-839-1998  
fax: 608-839-1995  
www.nrcdifference.com

Base Map Data Sources: NWE, WDOT, WDNR, Polk County GIS & USDA NAIP 2008 Orthophotography

The information presented in this map document is advisory and is intended for reference purposes only.



## APPENDIX A FIGURE 10 - ENVIRONMENTAL FEATURES and ACCESS PLAN Centuria 69 kV Transmission Line and Substation Project



**Location**  
Parts of S19 and S30-31, T35N, R17W;  
S36, T35N, R18W; S1 and S12, T34N, R18W  
Polk County, WI

0 200 400 Feet

**Project Information**  
Project Number : 009-0015-01  
September 4, 2009

**Legend**

- Nodes
- Approximate Proposed Structures
- Existing Distribution Line Structures
- Sample Point
- Approximate Preferred Route
- Approximate Alternate Route Segment
- Existing 69kV Transmission Line
- Existing Distribution Line
- Approximate Substation Site
- 180 ft Project ROW
- Trail
- Construction Access
- Township Line
- Section Line
- Municipal Boundary
- DNR 24k Hydrography
- Perennial Stream
- Intermittent Stream
- Waterbody
- NRCS Soil Survey Data
- Hydric Soil
- Poss. Hydric Inclusion
- Non-Hydric Soil
- Field Delineated Wetland
- Field Delineated Wetland Line
- WI Wetland Inventory Data

**Mapping Provided By:**

**NRC**  
Natural Resources Consulting, Inc.

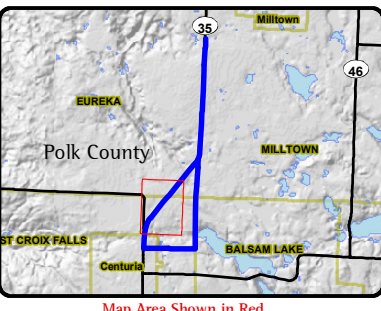
209 Commerce Parkway  
P.O. Box 128  
Cottage Grove, WI 53527-0128  
phone: 608-839-1998  
fax: 608-839-1995  
www.nrcdifference.com

Base Map Data Sources: NWE, WDOT, WDNR, Polk County GIS & USDA NAIP 2008 Orthophotography

Appendix A Figure 10 - Page 6 of 8



## APPENDIX A FIGURE 10 - ENVIRONMENTAL FEATURES and ACCESS PLAN Centuria 69 kV Transmission Line and Substation Project



**Location**  
Parts of S19 and S30-31, T35N, R17W;  
S36, T35N, R18W; S1 and S12, T34N, R18W  
Polk County, WI

0 200 400 Feet

**Project Information**  
Project Number : 009-0015-01  
September 4, 2009

**Legend**

- Nodes
- Approximate Proposed Structures
- Existing Distribution Line Structures
- Sample Point
- Approximate Preferred Route
- Approximate Alternate Route Segment
- Existing 69kV Transmission Line
- Existing Distribution Line
- Approximate Substation Site
- 180 ft Project ROW
- Trail
- Construction Access
- Township Line
- Section Line
- Municipal Boundary
- DNR 24k Hydrography
- Perennial Stream
- Intermittent Stream
- Waterbody
- NRCS Soil Survey Data
- Hydric Soil
- Poss. Hydric Inclusion
- Non-Hydric Soil
- Field Delineated Wetland
- Field Delineated Wetland Line
- WI Wetland Inventory Data

**Mapping Provided By:**

**NRC**  
Natural Resources Consulting, Inc.

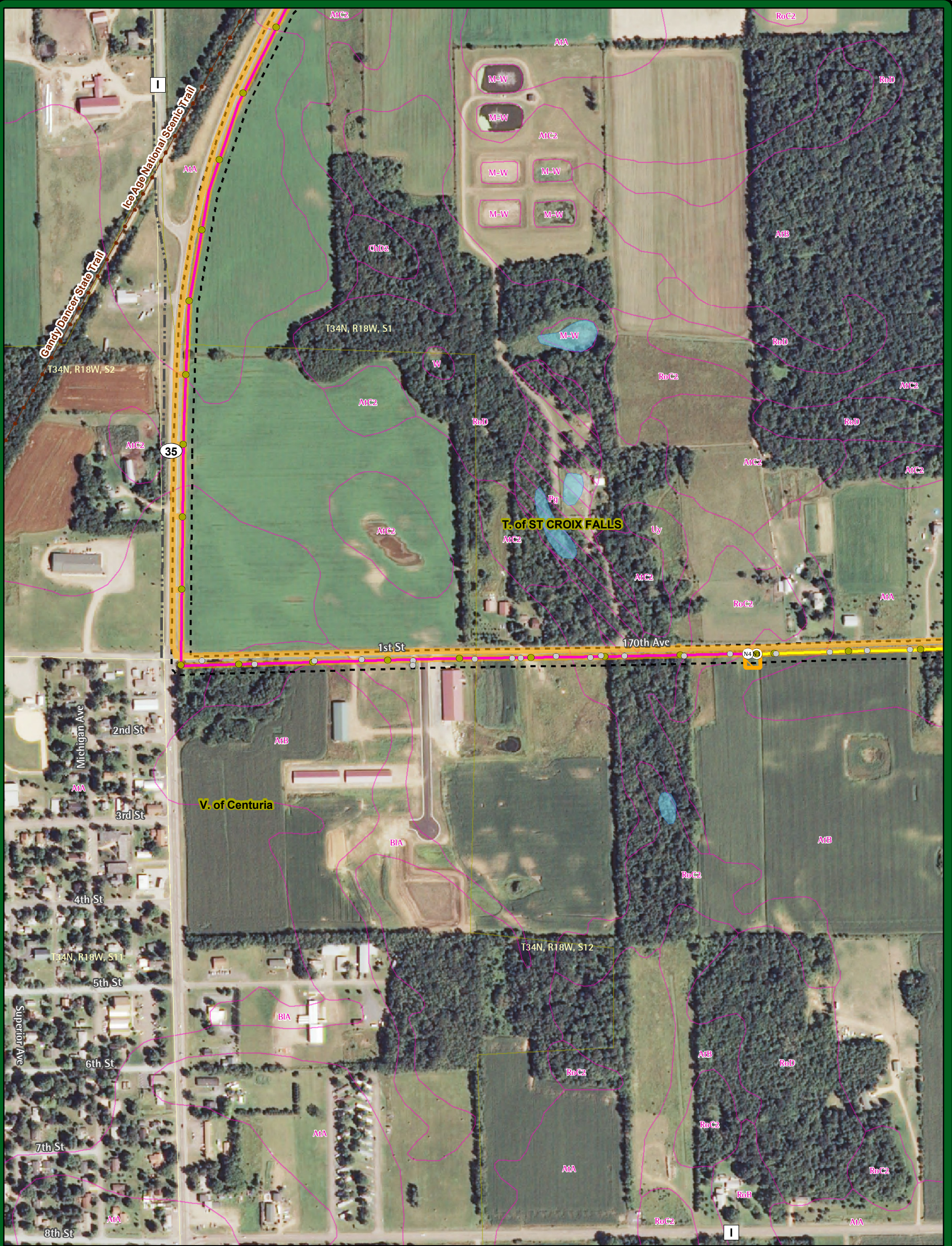
209 Commerce Parkway  
P.O. Box 128  
Cottage Grove, WI 53527-0128  
phone: 608-839-1998  
fax: 608-839-1995  
www.nrcdifference.com

Base Map Data Sources: NWE, WDOT, WDNR, Polk County GIS & USDA NAIP 2008 Orthophotography

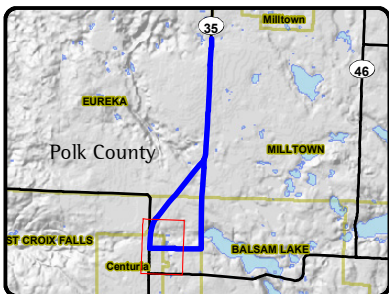
Appendix A Figure 10 - Page 7 of 8

The information presented in this map document is advisory and is intended for reference purposes only.





## APPENDIX A FIGURE 10 - ENVIRONMENTAL FEATURES and ACCESS PLAN Centuria 69 kV Transmission Line and Substation Project



**Location**  
Parts of S19 and S30-31, T35N, R17W;  
S36, T35N, R18W; S1 and S12, T34N, R18W  
Polk County, WI

0 200 400 Feet

**Project Information**  
Project Number : 009-0015-01  
September 4, 2009

**Legend**

○ Nodes	— 180 ft Project ROW	■ NRC Soil Survey Data
● Approximate Proposed Structures	— Trail	○ Hydric Soil
○ Existing Distribution Line Structures	— Construction Access	○ Poss. Hydric Inclusion
● Sample Point	— Township Line	○ Non-Hydric Soil
— Approximate Preferred Route	— Section Line	— Field Delineated Wetland
— Approximate Alternate Route Segment	— Municipal Boundary	— Field Delineated Wetland Line
— Existing 69kV Transmission Line	— DNR 24k Hydrography	— WI Wetland Inventory Data
— Existing Distribution Line	— Perennial Stream	
— Approximate Substation Site	— Intermittent Stream	
	— Waterbody	

**Mapping Provided By:**

**NRC**  
Natural Resources Consulting, Inc.

209 Commerce Parkway  
P.O. Box 128  
Cottage Grove, WI 53527-0128  
phone: 608-839-1998  
fax: 608-839-1995  
www.nrcdifference.com

Base Map Data Sources: NWE, WDOT, WDNR, Polk County GIS & USDA NAIP 2008 Orthophotography

Appendix A Figure 10 - Page 8 of 8

**DOCKET NO. 4280-CE-106**

**APPENDIX A, Table 1A - General Route Impacts - (AFR Section 2.4.1.1)**

**NWE Centuria 69 kV Transmission Line and Substation**

Segment	New Line Requirements (2.4.1.1.1-2.4.1.1.4)					Existing ROW (2.4.1.1.5-2.4.1.1.6)					New (additional) ROW Required (2.4.1.1.7)		ROW Sharing for Segment (2.4.1.1.8)				COMMENTS
	Total Segment Length <sup>1</sup> (ft)	Segment Length (Miles)	Length <sup>2</sup> (ft)	Project ROW Width Required (ft) <sup>3</sup>	ROW Requirement (Acres) <sup>4</sup>	ROW Type	Existing ROW Length Shared (ft)	Existing ROW Width (ft) <sup>6</sup>	Existing ROW Width Shared (ft)	Area of Shared ROW (acres)	Width (ft)	Acres	% New ROW Length Shared	New ROW Width Shared (ft)	% Existing ROW Width Shared	% New Project ROW Width Shared	
Preferred N1-N2	12,197	2.3	12,197	80.0	22.40	RD/DL	10,560	87-151	60	14.55	20	4.85	86.6	60	41.0	75.0	
						RD	1,637	66	39	1.47	41	1.54	13.4	39	59.0	49.0	
Preferred N2-N3	11,616	2.2	11,616	80.0	21.33	RD/DL	7,922	87-151	60	10.91	20	3.64	68.2	60	41.0	75.0	
						RD	3,694	66	39	3.31	41	3.48	31.8	39	59.0	49.0	
Alternate N2-N4	13,200	2.5	13,200	80.0	24.24	RD/DL	2,534	87	60	3.49	20	1.16	19.2	60	41.0	75.0	
						RD	10,666	100	39	9.55	41	10.04	80.8	39	59.0	49.0	
<b>Total</b>	<b>37,013</b>	<b>7.0</b>	<b>NA</b>	<b>NA</b>	<b>68.0</b>	<b>NA</b>	<b>37,013</b>	<b>NA</b>	<b>NA</b>	<b>43.3</b>	<b>NA</b>	<b>24.7</b>	<b>NA</b>	<b>NA</b>	<b>NA</b>	<b>NA</b>	

Total % Of Route Acres Shared with Existing Corridors 63.7

Source Material:

ROW type Codes	ROW Type
TL	Transmission line
DL <sup>6</sup>	Distribution Line (for cross-country distribution circuits)
RR	Railroad
RD	Roadway
GL	Gas Pipeline
RD/DL	Road/Distribution Line (For distribution lines that share all or part of a road ROW)

<sup>1,2,3,4,5</sup> The entire project is located adjacent to existing road ROW and in most areas existing distribution line ROW, therefore the segment length and total length are the same.

<sup>6</sup> Town roads 170th Ave and 180th St have a 66' existing ROW and STH 35 switches between a 115' or 130' existing ROW. Distribution line has a 40' existing ROW

**DOCKET NO. 4280-CE-106**

**Appendix A, Table 1B - Distance to Potentially Sensitive Buildings - (AFR Section 2.4.1.4)**

**NWE Centuria 69 kV Transmission Line and Substation**

		<b>Building Distance from ROW Centerline</b>												
		Residences/Apartments*						Schools, Day-care Centers, & Hospitals*						Commercial /Industrial
		0-25 ft	26-50 ft	51-100 ft	101-150 ft	151-300 ft	Total	0-25 ft	26-50 ft	51-100 ft	101-150 ft	151-300 ft	Total	0-100 ft
<b>Preferred N1-N2</b>	Residential <sup>1</sup>	0	0	0	4	10	14	0	0	0	0	0	0	0
	Out Building <sup>2</sup>	1	1	1	1	23	27							
<b>Preferred N2-N3</b>	Residential <sup>1</sup>	0	0	1	4	10	15	0	0	0	0	DC=1	1	
	Out Building <sup>2</sup>	0	0	1	5	15	21							
<b>Alternate N2-N4</b>	Residential <sup>1</sup>	0	0	0	2	3	5	0	0	0	0	0	0	1
	Out Building <sup>2</sup>	0	0	0	1	5	6							
<b>Total</b>		<b>1</b>	<b>1</b>	<b>3</b>	<b>17</b>	<b>66</b>	<b>88</b>	<b>0</b>	<b>0</b>	<b>0</b>	<b>0</b>	<b>1</b>	<b>1</b>	<b>1</b>

<sup>1</sup> There are no multi-family dwellings or apartment units within 300 feet of centerline. There are no hospitals, or schools within 300 feet of centerline. There is one single family residential based day-care approximately 155 feet from preferred route N2-N3.

<sup>2</sup> Out buildings counted in this category included garages, sheds, barns, silos, and other unoccupied buildings.

Source Material: Building distances measured by GIS from 2008 NAIP Aerial Photography with field verification of building type.

\* Use the building codes below to identify building types

Building Codes	Building Types
K	Apartment Buildings - up to 4 Units
L	Apartment Buildings - 5-16 Units
M	Apartment Buildings - >16 Units
H	Hospital
S	School
DC	Day-care Center

**DOCKET NO. 4280-CE-106**

**Appendix A, Table 2 Natural Resource, Residential, and Commercial Impact by Segment and Route (AFR section 2.4.2.1)**

**NWE Centuria 69 kV Transmission Line and Substation**

GENERAL SEGMENT DATA (2.4.2.1.1-2.4.2.1.6)							LAND COVER CATEGORIES (Only show categories that occur on the route - for categories see below and section 2.4.2.1.7)																											
							AGRICULTURAL (2.4.2.1.7.1)						NON AGRICULTURAL UPLAND (2.4.2.1.7.2)						WETLAND (2.4.2.1.7.2.2)						DEVELOPED (2.4.2.1.7.3)									
							Cropland			Old Field			Grassland			Upland Forest			Non-Forested Wetland			Source of Wetland ID	Residential			Commercial			Segment Length Check <sup>1</sup>	COMMENTS				
Length (Feet)	Existing ROW Area Shared (acres)	New ROW Area Required (acres)	Length (Feet)	Existing ROW Area Shared (acres)	New ROW Area Required (acres)	Length (Feet)	Existing ROW Shared Area (acres)	New ROW Area Required (acres)	Length (Feet)	Existing ROW Shared Area (acres)	New ROW Area Required (acres)	Length (Feet)	Existing ROW Shared Area (acres)	New ROW Area Required (acres)	Length (Feet)	Existing ROW Shared Area (acres)	New ROW Area Required (acres)	Length (Feet)	Existing ROW Shared Area (acres)	New ROW Area Required (acres)	Length (Feet)		Existing ROW Shared Area (acres)	New ROW Area Required (acres)	Length (Feet)	Existing ROW Shared Area (acres)	New ROW Area Required (acres)	Misc ROW						
Segment	ROW Width Required - (Existing/New ) (ft)	Existing ROW Width Used (ft)	New ROW Width Required (ft)	Total Segment Length (ft)	Segment Length Shared with Existing ROW (ft)																													
Preferred	RD/DL	60/20	60	20	10,560	10,560																												
N1-N2	RD	39/41	39	41	1,637	1,637	3,464	2.57	3.8	65	0.00	0.1	6,281	10.96	0.57	1,324	0.85	1.58	229	0.32	0.10	FD (05-09)	392	0.43	0.29	0	0.00	0.00	11,755					
Preferred	RD/DL	60/20	60	20	7,922	7,922																												
N2-N3	RD	39/41	39	41	3,694	3,694	4,663	5.74	2.8	1,373	2.29	0.2	2,081	1.84	1.98	1,117	1.07	0.98	289	0.49	0.04	FD (05-09)	501	0.60	0.32	0	0.00	0.00	10,023					
Alternate	RD/DL	60/20	60	20	2,534	2,534																												
N3-N4	RD	39/41	39	41	10,666	10,666	3,475	0.40	6.0	632	0.49	0.7	4,233	5.47	2.30	1,084	0.51	1.48	82	0.02	0.13	FD (07-09)	316	0.03	0.55	142	0.17	0.09	9,822					
	<b>Total</b>	<b>60/20 or 39/41</b>	<b>39/60</b>	<b>20/41</b>	<b>37,013</b>	<b>37,013</b>	<b>11,603</b>	<b>8.71</b>	<b>12.59</b>	<b>2,070</b>	<b>2.78</b>	<b>1.02</b>	<b>12,594</b>	<b>18.27</b>	<b>4.85</b>	<b>3,524</b>	<b>2.43</b>	<b>4.04</b>	<b>599</b>	<b>0.83</b>	<b>0.27</b>	<b>NA</b>	<b>392</b>	<b>0.43</b>	<b>0.29</b>	<b>0</b>	<b>0.00</b>	<b>0.00</b>	<b>31,600</b>					

<sup>1</sup> The length discrepancy is attributed to the few road crossings. Road Crossings =5413' and 9.96 acres.

<sup>2</sup> Source material:

Agricultural and non-agricultural land use estimated from the 2008 aerial photographs and site visits

All wetlands within the ROW were field delineated per the 1987 USACE Manual during May - July 2009. Forested vs. non-forested wetlands were determined using the results of the field delineation and the 2008 NAIP aerial photography.

Land Cover Categories (2.4.2.1.7)	
Agriculture (2.4.2.1.7.1)	Non-Agricultural Upland(2.4.2.1.7.2)
Cropland	Upland forest
Pasture	Prairie/Grassland
Old Field	Other
Agriculture - specialty (2.4.2.1.4.1)	Wetland (2.4.2.1.7.2.2)
Ginseng	Forested Wetland
Tree Farm	Non-forested Wetland
Orchard	
Cranberry Bog	
Developed land (2.4.2.1.7.3)	
Residential	
Commercial/ Industrial	

Wetland Id Source codes	
WWI	Wisc. Wetland Inventory
APD(xx)	Aerial Photo Delineation (year photo taken i.e. 05)
FD(x-xx)	Field Delineation (Date mo-yr)

DOCKET NO. 4280-CE-106

Appendix A, Table 3 - Impacts - Public and Tribal Lands (AFR section 2.4.3.1)

NWE Centuria 69 kV Transmission Line and Substation

		General Segment Data			FEDERAL LAND (2.4.3.1.4.1) <sup>1</sup>		STATE LAND <sup>1</sup> (2.4.3.1.4.2)						COUNTY <sup>1</sup> (2.4.3.1.4.3)		VILLAGE/CITY <sup>1</sup> (2.4.3.1.4.4)		TRIBAL LANDS <sup>1</sup> (2.4.3.1.4.5)		COMMENTS
					<i>n/a</i>		<i>DOT</i>		Trail		<i>WI DNR</i>		<i>n/a</i>		<i>n/a</i>		<i>n/a</i>		
Segment		Existing ROW Width Shared (ft)	New ROW Width Required (ft)	Total Segment Length (ft)	Length (ft)	Acres	Length (ft)	Acres	Length (ft)	Acres	Length (ft)	Acres	Length (ft)	Acres	Length (ft)	Acres	Length (ft)	Acres	
Preferred N1-N2	RD/DL	60	20	10,560	0	0.0	10,560	9.5	272	0.5	0	0.0	0	0.0	0	0.0	0	0.0	
	RD	39	41	1,637	0	0.0	1,637	1.5	0	0.0	0	0.0	0	0.0	0	0.0	0	0.0	
Preferred N2-N3	RD/DL	60	20	7,922	0	0.0	0	0.0	0	0.0	0	0.0	0	0.0	54	0.1	0	0.0	
	RD	39	41	3,694	0	0.0	0	0.0	0	0.0	0	0.0	0	0.0	0	0.0	0	0.0	
Alternate N3-N4	RD/DL	60	20	2,534	0	0.0	0	0.0	0	0.0	0	0.0	0	0.0	980	1.8	0	0.0	
	RD	39	41	10,666	0	0.0	10,666	9.6	0	0.0	0	0.0	0	0.0	0	0.0	0	0.0	
<b>Total</b>		<b>39/60</b>	<b>20/41</b>	<b>37,013</b>	<b>0</b>	<b>0.0</b>	<b>22,863</b>	<b>20.5</b>	<b>272</b>	<b>0.5</b>	<b>0</b>	<b>0.0</b>	<b>0</b>	<b>0.0</b>	<b>1,034</b>	<b>1.9</b>	<b>0</b>	<b>0.0</b>	

Refer to section 2.4.3 of the PSC Transmission Line AFR - V17B

Source Material: GIS Database

<sup>1</sup> All road crossings were not included in Public Land calculations.

ROW type Codes	ROW Type
TL	Transmission line
DL <sup>6</sup>	Distribution Line (for cross-country distribution circuits)
RR	Railroad
RD	Roadway
GL	Gas Pipeline
RD/DL	road ROW)

**DOCKET NO. 4280-CE-106**

Appendix A, Table 4. Route Impact Summary

NWE Centuria 69 kV Transmission Line and Substation

			Land Cover Impacts							Residences/Apartments <sup>2</sup>					
Route	Route Length (ft)	Route Length (miles)	Upland (acres)				Wetland (acres)			Residences/Apartments <sup>2</sup>					
			Agriculture (Existing and New ROW)	Non-Ag Upland <sup>1</sup> (Existing and New)	Upland Forest (Existing ROW)	Upland Forest (New ROW)	Forested Wetland (Existing ROW)	Forested Wetland (New ROW)	Non forested Wetland (New and Existing ROW)	0-25 ft	26-50 ft	51-100 ft	101-150 ft	151-300 ft	Total
Preferred N1-N2	12,197	2.3	6.7	11.5	0.9	1.6	0.0	0.0	0.4	0	0	0	4	10	14
Preferred N2-N3	11,616	2.2	8.5	3.8	1.1	1.0	0.0	0.0	0.5	0	0	1	4	10	15
Alternate N3-N4	13,200	2.5	6.4	7.8	0.5	1.5	0.0	0.0	0.2	0	0	0	2	3	5

<sup>1</sup> Per Section 2.4.2.1.7.2.1.1, this category excludes upland forest.

<sup>2</sup> All residences identified were single family.